

--- Tunbridge Wells District Boundary

E-bike Scenario (Top 50 Straight Lines) Updated with New Development Flows

No. of Cyclists

- ≤40
- ≤50
- ≤100
- ≤150
- ≤305

Existing/ Planned Cycling Routes

- Existing Routes
- Potential Routes (2019 LCWIP)
- National Cycle Network (NCN)

Derived using data from Propensity to Cycle Tool (<http://pct.bike>)
Contains OS data © Crown Copyright and database right 2020
Contains data from OS Zoomstack, Contains OS data © Crown Copyright and database right 2019



The Aquarium
King Street
Reading
RG1 2AN
T. 0118 956 0909

CLIENT

Tunbridge Wells
Borough Council

PROJECT

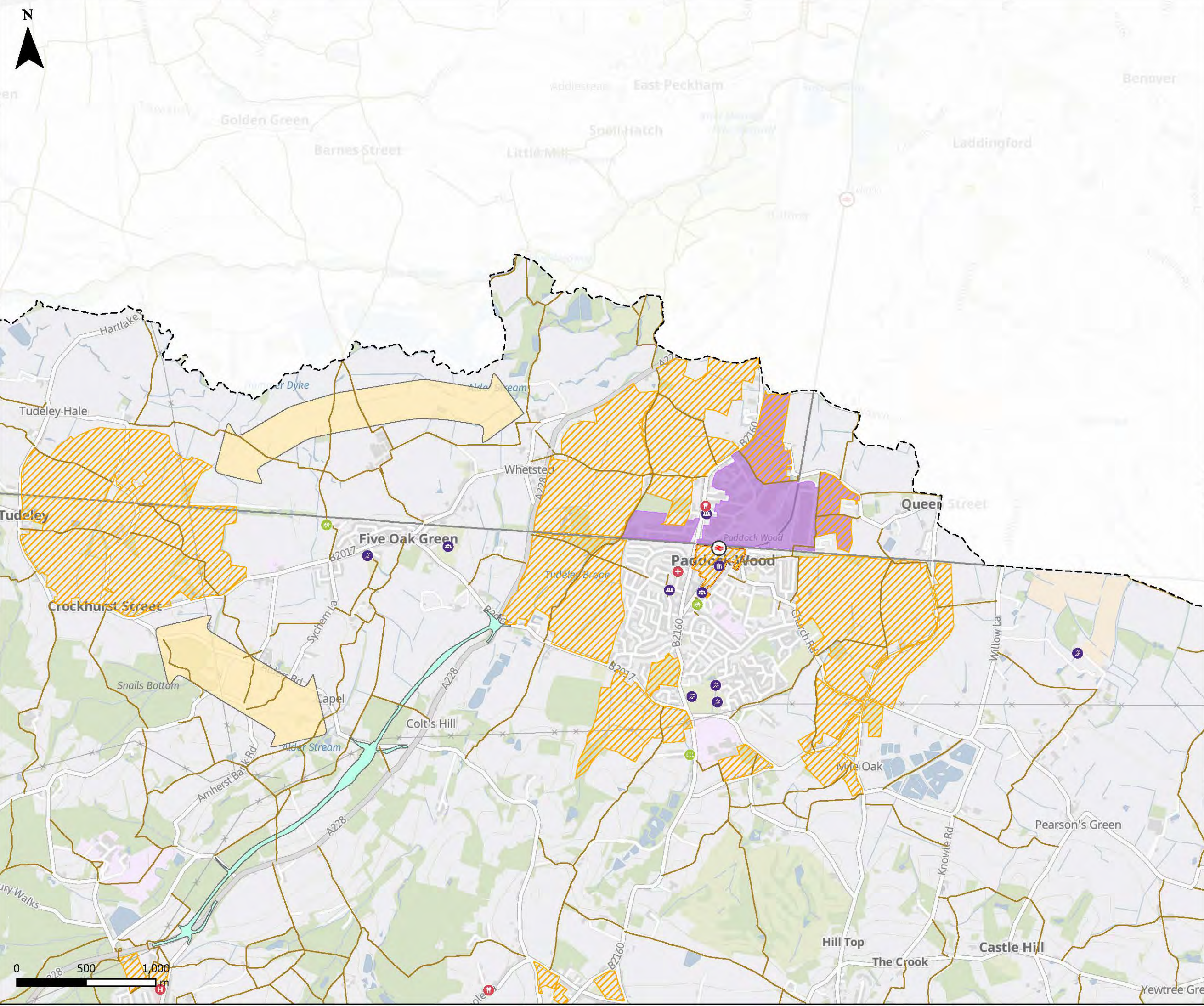
Tunbridge Wells
LCWIP + LTN

TITLE

PROPNESITY TO CYCLE
E-BIKE SCENARIO
(TOP 50 STRAIGHT LINES)
(ROYAL TUNBRIDGE WELLS)

SCALE	DRAWN	REVIEWED	DATE
A3 @ 1:24,000	JY	BC	12/01/2021

FIGURE NUMBER	REVISION
33	-



- Tunbridge Wells District Boundary
- Railway Station
- Public Right of Way
- Healthcare Facilities**
 - Hospital/ Hospice
 - GP Surgery/ Clinic
 - Dentist
- Education Facilities**
 - Nursery
 - Primary School
 - Secondary School
 - College/ Sixth Form
 - All Through School
- Amenities**
 - Community Centre/ Village Hall
 - Library
 - Post Office
 - Sport Facility
 - Theatre/ Cinema
 - Tourist Attraction
- Draft Local Plan Policies**
 - Town Centre Boundaries
 - Neighbourhood Centres
 - Key Employment Areas
 - Allocated Sites
- Safeguarded Road Links**
 - A228: Colts Hill Bypass
 - A228: Garden Village Link

Contains public sector information licensed under the OGL v3.0
Contains OS data © Crown Copyright and database right 2019
Contains data from OS Zoomstack

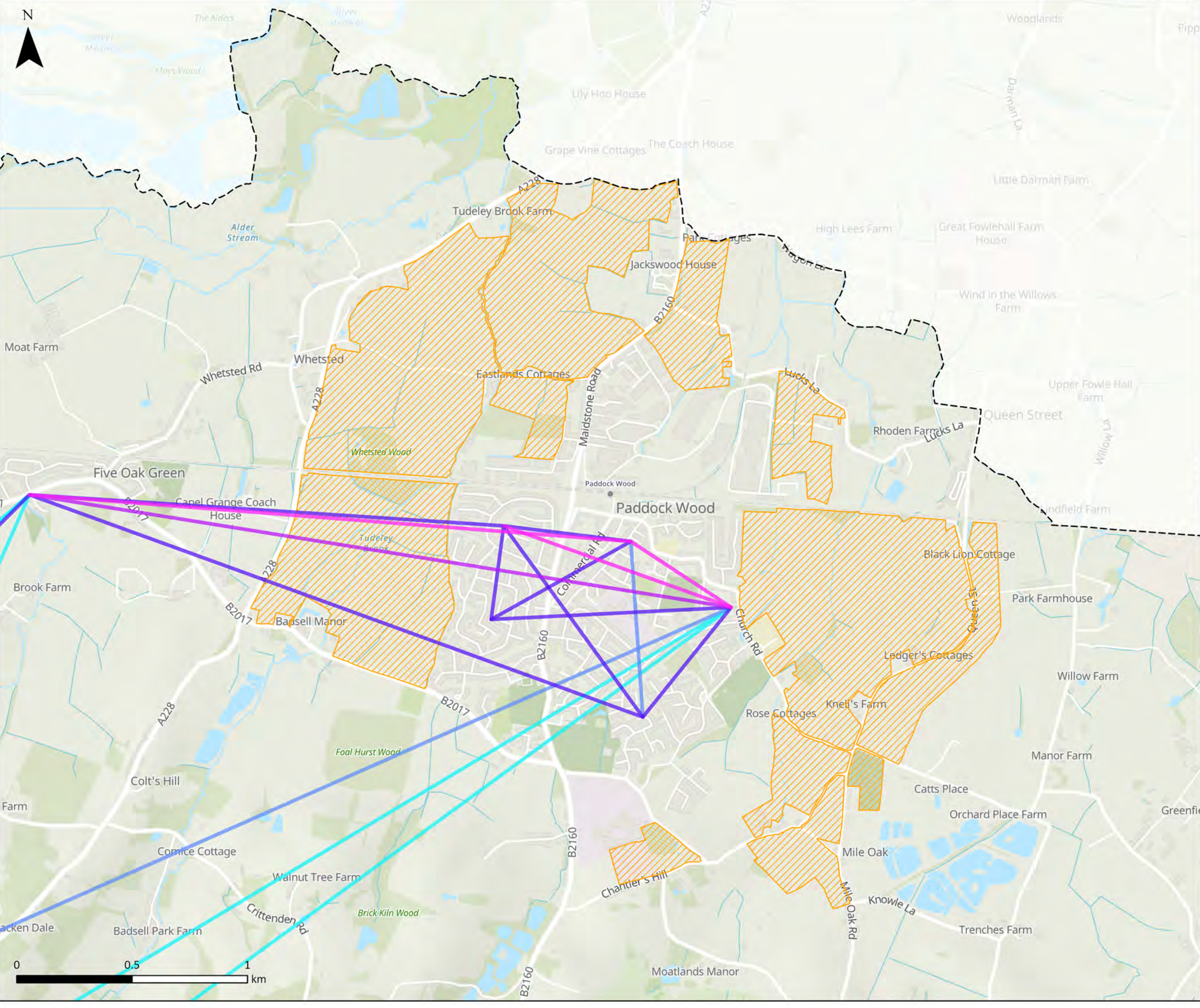


Spaces
60 St Martin's Lane
London
WC2N 4JS
T. 020 3963 2739

CLIENT	
Tunbridge Wells Borough Council	
PROJECT	
Tunbridge Wells LCWIP + LTN	
TITLE	

EXISTING FACILITIES PLAN (PADDOCK WOOD)

SCALE	DRAWN	REVIEWED	DATE
A3 @ 1:25,000	JY	BC	05/05/2020
FIGURE NUMBER		REVISION	
02		C	



Tunbridge Wells District Boundary

Major Residential Developments

E-bike Scenario (Top 50 Straight Lines) Updated with New Development Flows

No. of Cyclists

- ≤40
- ≤50
- ≤100
- ≤150
- ≤305

Derived using data from Propensity to Cycle Tool (<http://pct.bike>)
Contains OS data © Crown Copyright and database right 2020
Contains data from OS Zoomstack, Contains OS data © Crown Copyright and database right 2019



PJA

The Aquarium
King Street
Reading
RG1 2AN
T. 0118 956 0909

CLIENT

**Tunbridge Wells
Borough Council**

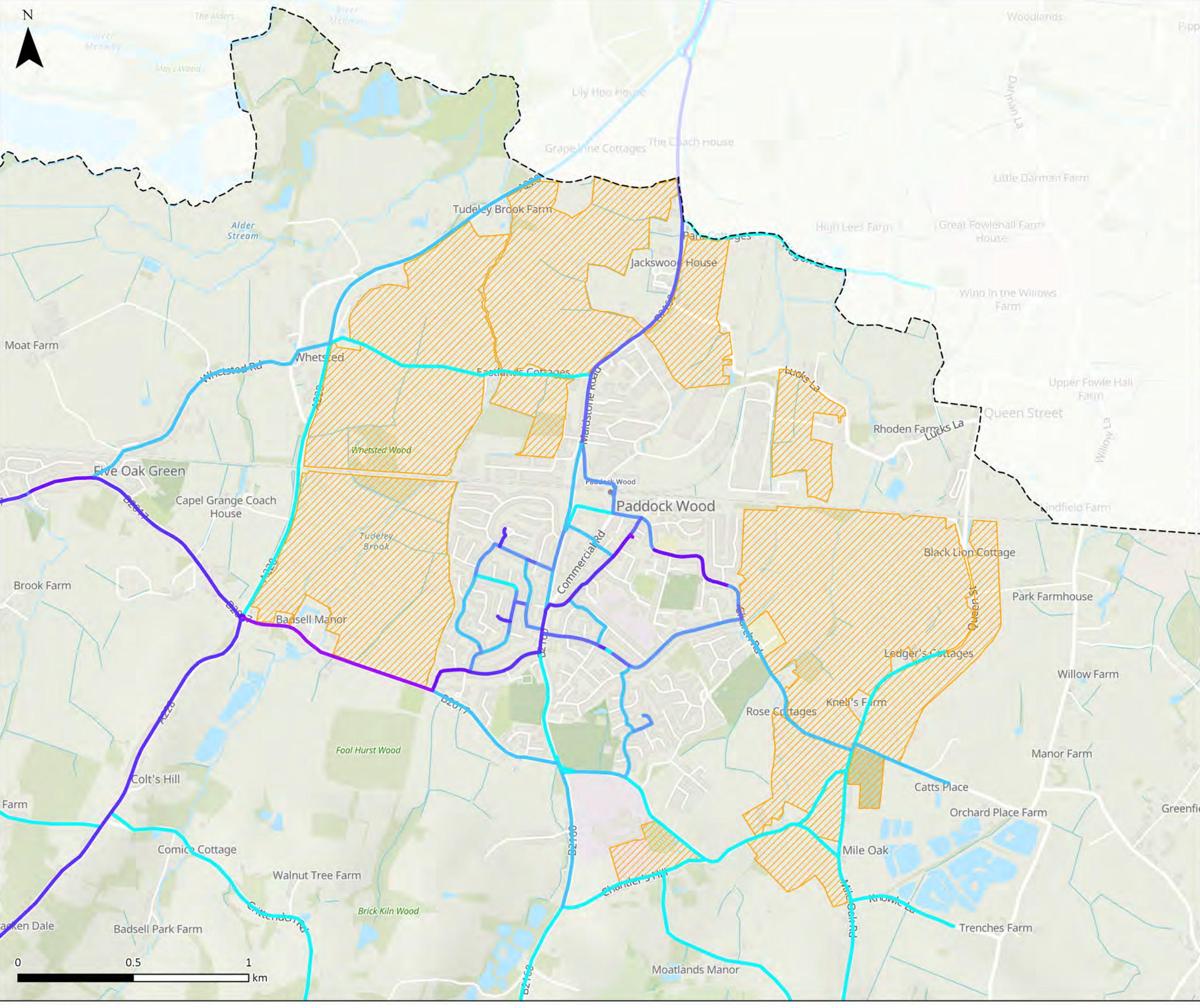
PROJECT

**Tunbridge Wells
LCWIP + LTN**

TITLE

**PROPENSITY TO CYCLE
E-BIKE SCENARIO
(TOP 50 STRAIGHT LINES)
(PADDOCK WOOD)**

SCALE	DRAWN	REVIEWED	DATE
A3 @ 1:15,000	JY	BC	12/01/2021
FIGURE NUMBER	REVISION		
35			



Tunbridge Wells District Boundary

Major Residential Developments

E-bike Scenario (LSOA Network) Updated with New Development Flows

No. of Cyclists

- ≤32
- ≤72
- ≤116
- ≤166
- ≤229
- ≤317
- ≤452
- ≤634
- ≤854
- ≤1305

Derived using data from Propensity to Cycle Tool (<http://pct.bike>)
Contains OS data © Crown Copyright and database right 2020
Contains data from OS Zoomstack, Contains OS data © Crown Copyright and database right 2019



The Aquarium
King Street
Reading
RG1 2AN
T. 0118 956 0909

CLIENT

Tunbridge Wells
Borough Council

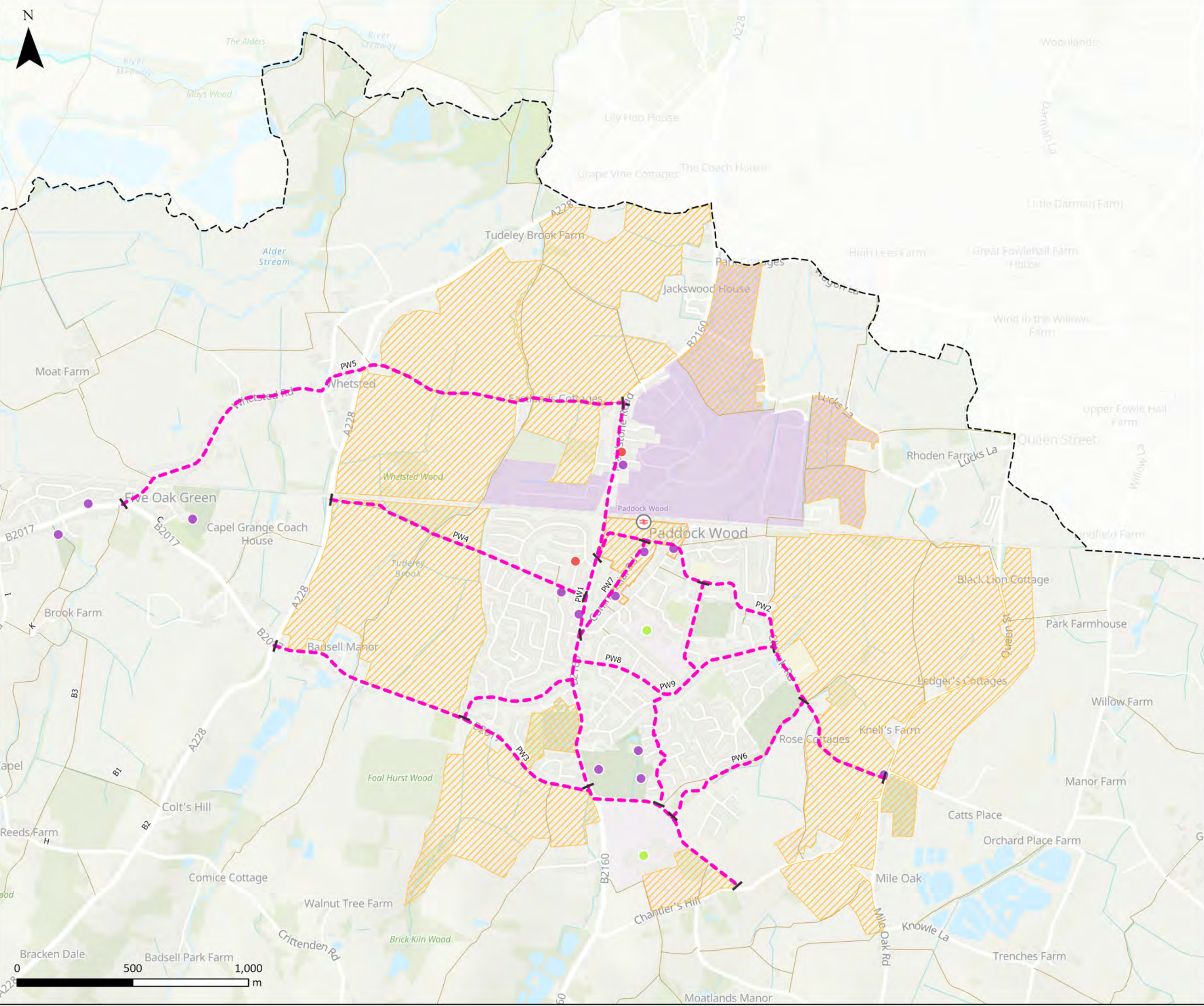
PROJECT

Tunbridge Wells
LCWIP + LTN

TITLE


PCT E-BIKE SCENARIO
(APPLIED NETWORK)
(PADDOCK WOOD)

SCALE	DRAWN	REVIEWED	DATE
A3 @ 1:15,000	JY	BC	12/01/2021
FIGURE NUMBER	REVISION		
34			



- Tunbridge Wells District Boundary
- Paddock Wood routes (PW1-14)
- Trip Attractors
 - Railway Station
 - Amenities
 - Education Facilities
 - Healthcare Facilities
 - Public Right of Way
- Existing/ Planned Cycling Routes
 - Existing Routes
 - Potential Routes (2019 LCWIP)
 - National Cycle Network (NCN)
 - Proposed NCN 178
- Draft Local Plan Designations
 - Allocated Sites
 - Neighbourhood Centres
 - Town Centre Boundaries
 - Key Employment Areas

Derived from public sector info licensed under the OGL v3.0
Contains OS data © Crown Copyright and database right 2020
Contains data from OS Zoomstack, Contains OS data © Crown Copyright and database right 2019



The Aquarium
King Street
Reading
RG1 2AN
T. 0118 956 0909

CLIENT

**Tunbridge Wells
Borough Council**

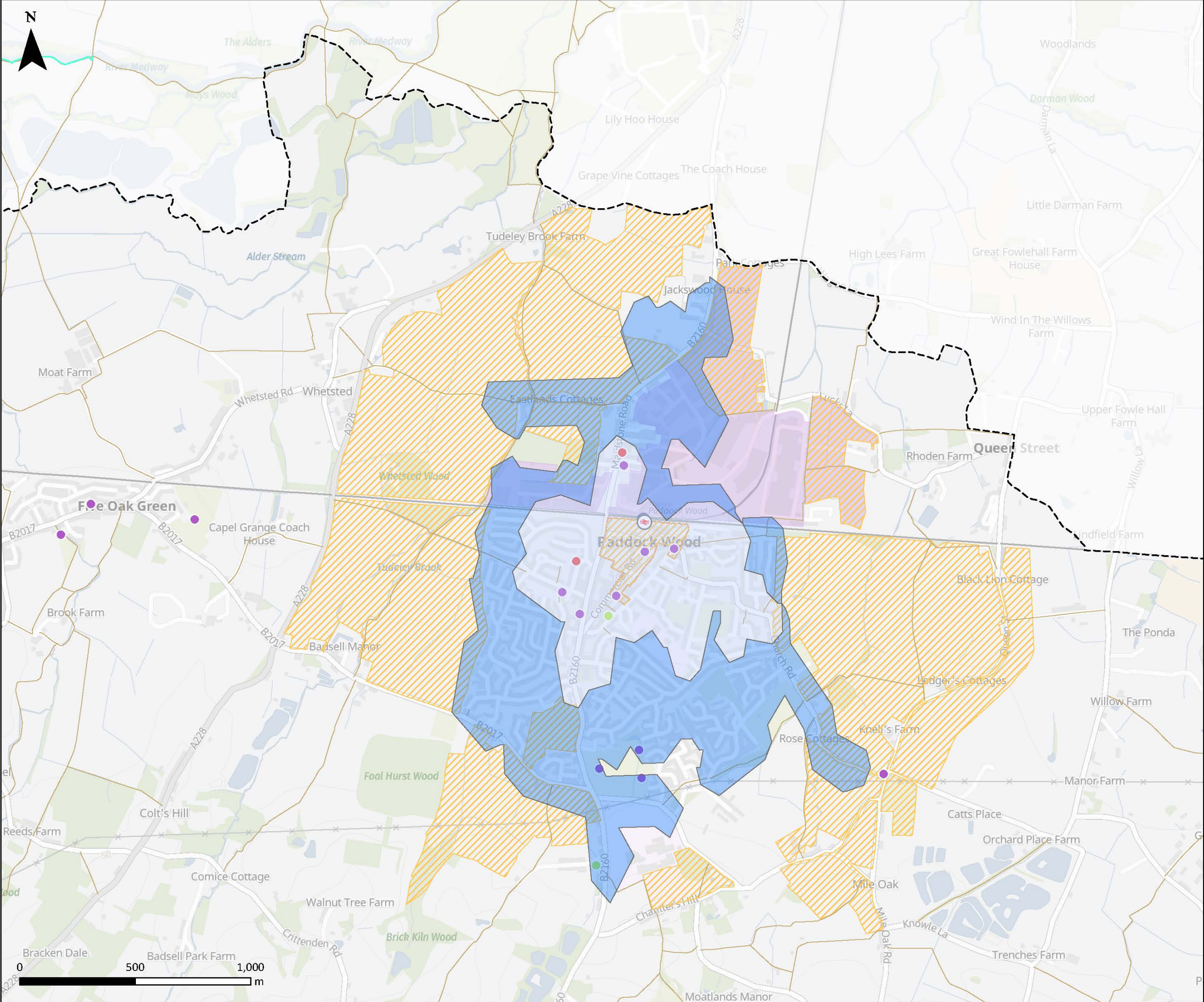
PROJECT

**Tunbridge Wells
LCWIP + LTN**

TITLE

**PADDOCK WOOD:
LCWIP CYCLE ROUTES**

SCALE	DRAWN	REVIEWED	DATE
A3 @ 1:15,000	JY	BC	19/01/2021
FIGURE NUMBER	REVISION		
24	A		



Walk Time

≤10 mins

≤20 mins

Trip Attractors

Railway Station

Amenities

Education Facilities

Healthcare Facilities

Tunbridge Wells District Boundary

Public Right of Way

Existing/ Planned Cycling Routes

Existing Routes

Potential Routes (2019 LCWIP)

National Cycle Network (NCN)

Proposed NCN 178

Draft Local Plan Designations

Allocated Sites

Neighbourhood Centres

Town Centre Boundaries

Key Employment Areas

Derived from public sector info licensed under the OGL v3.0
Contains OS data © Crown Copyright and database right 2019
Contains data from OS Zoomstack

PJA The Aquarium
King Street
Reading
RG1 2AN
T. 0118 956 0909

CLIENT

**Tunbridge Wells
Borough Council**

PROJECT

**Tunbridge Wells
LCWIP + LTN**

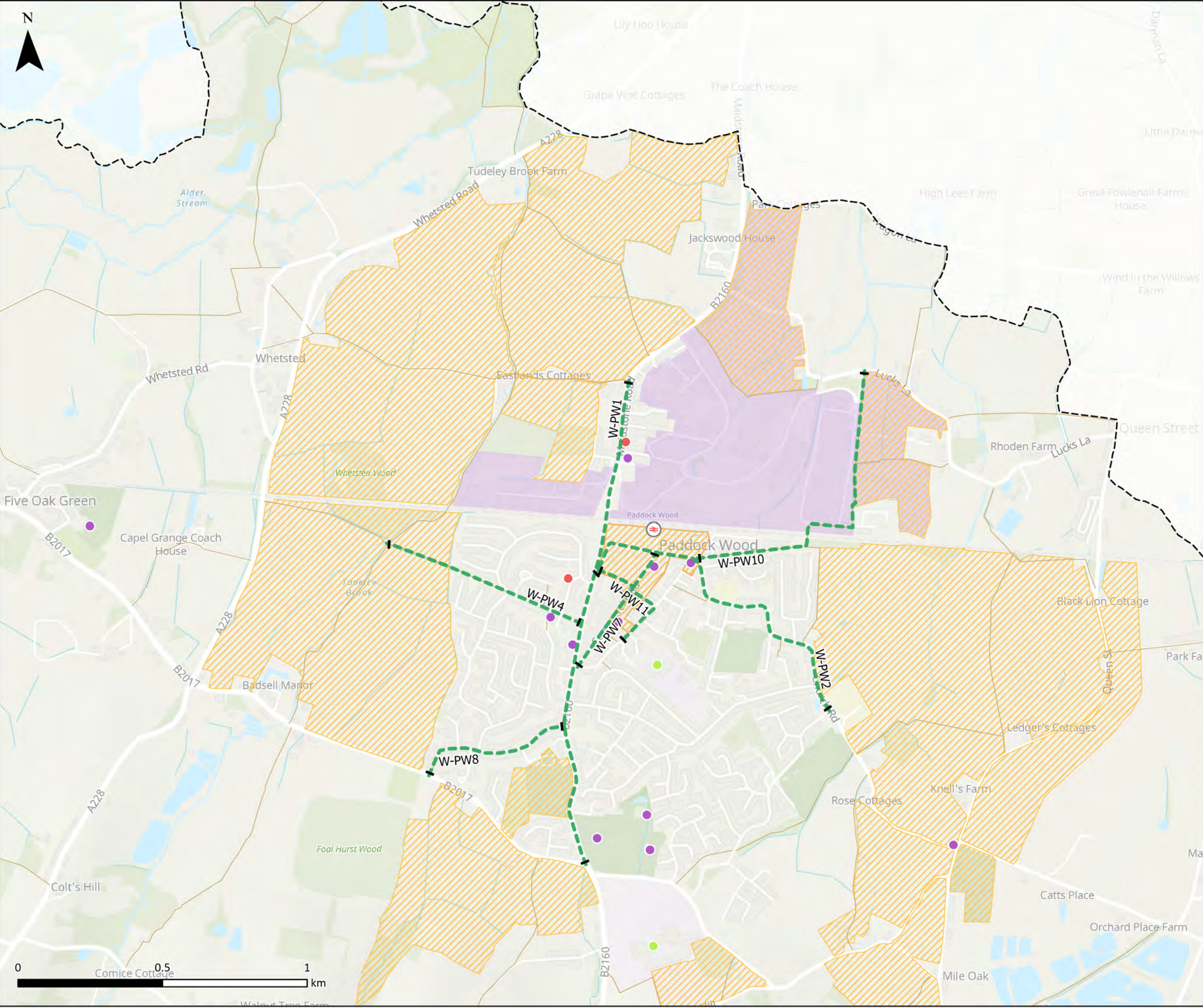
TITLE

**PADDOCK WOOD
WALKING ISOCHRONES**

SCALE A3 @ 1:15,000 DRAWN JY REVIEWED BC DATE 22/06/2020

FIGURE NUMBER REVISION

28



- Tunbridge Wells District Boundary
- Identified Walking Routes
- Trip Attractors
 - Railway Station
 - Amenities
 - Education Facilities
 - Healthcare Facilities
- Public Right of Way
- Draft Local Plan Designations
 - Allocated Sites
 - Neighbourhood Centres
 - Town Centre Boundaries
 - Key Employment Areas

Derived from public sector info licensed under the OGL v3.0
Contains OS data © Crown Copyright and database right 2020
Contains data from OS Zoomstack, Contains OS data © Crown Copyright and database right 2019

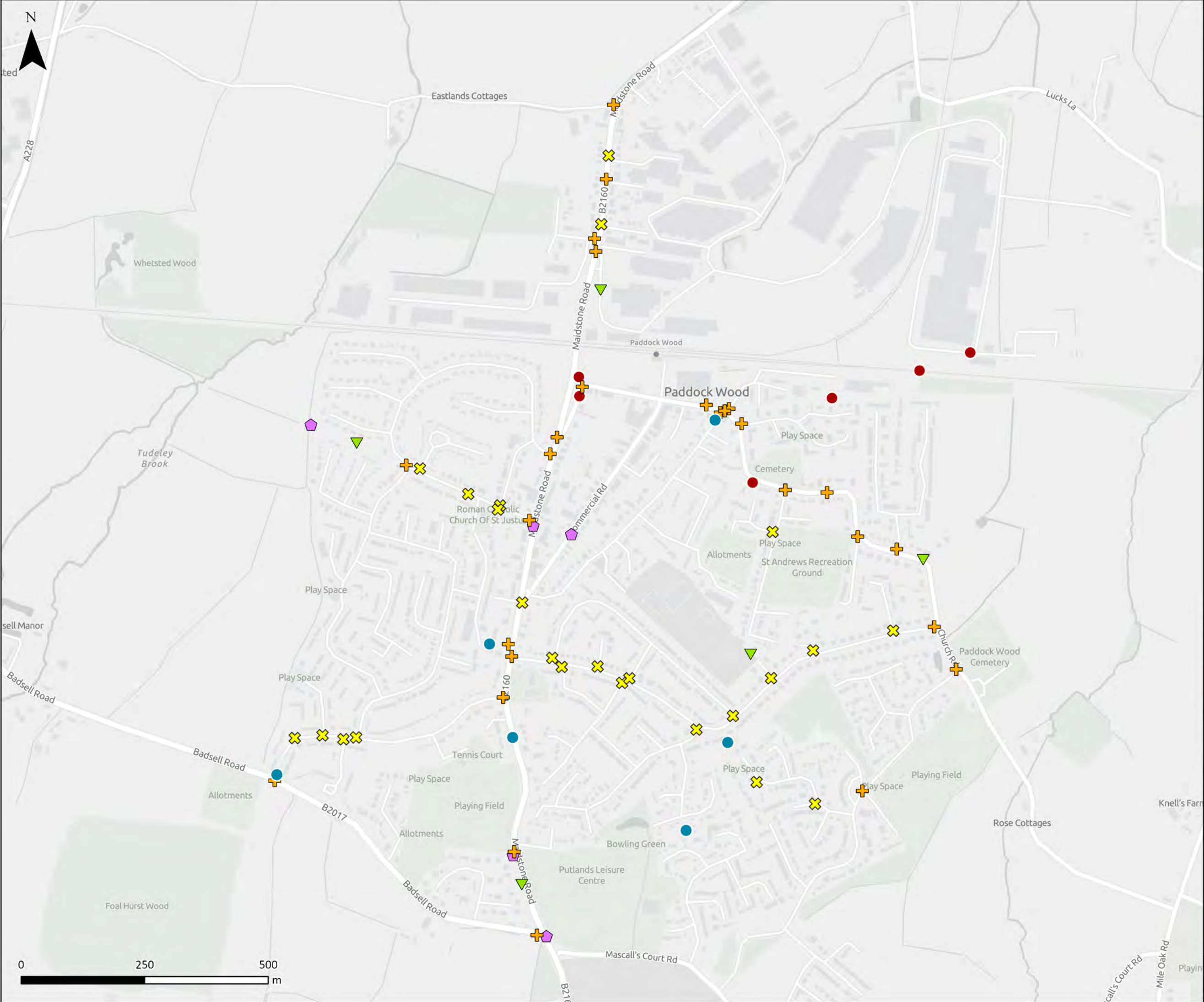


The Aquarium
King Street
Reading
RG1 2AN
T. 0118 956 0909

CLIENT
Tunbridge Wells Borough Council
PROJECT
Tunbridge Wells LCWIP + LTN
TITLE

PADDOCK WOOD: LCWIP WALKING ROUTES

SCALE	DRAWN	REVIEWED	DATE
A3 @ 1:12,000	JY	BC	13/01/2021
FIGURE NUMBER	REVISION		
37			



Tunbridge Wells District Boundary

LCWIP Design Measures

Type

- Cycle Measures
- De-Cluttering
- Footway widening/installation
- Junction
- Maintenance
- Missing DK/Tactile

Contains OS data © Crown Copyright and database right 2020
Contains data from OS Zoomstack



The Aquarium
King Street
Reading
RG1 2AN
T. 0118 956 0909

CLIENT

Tunbridge Wells
Borough Council

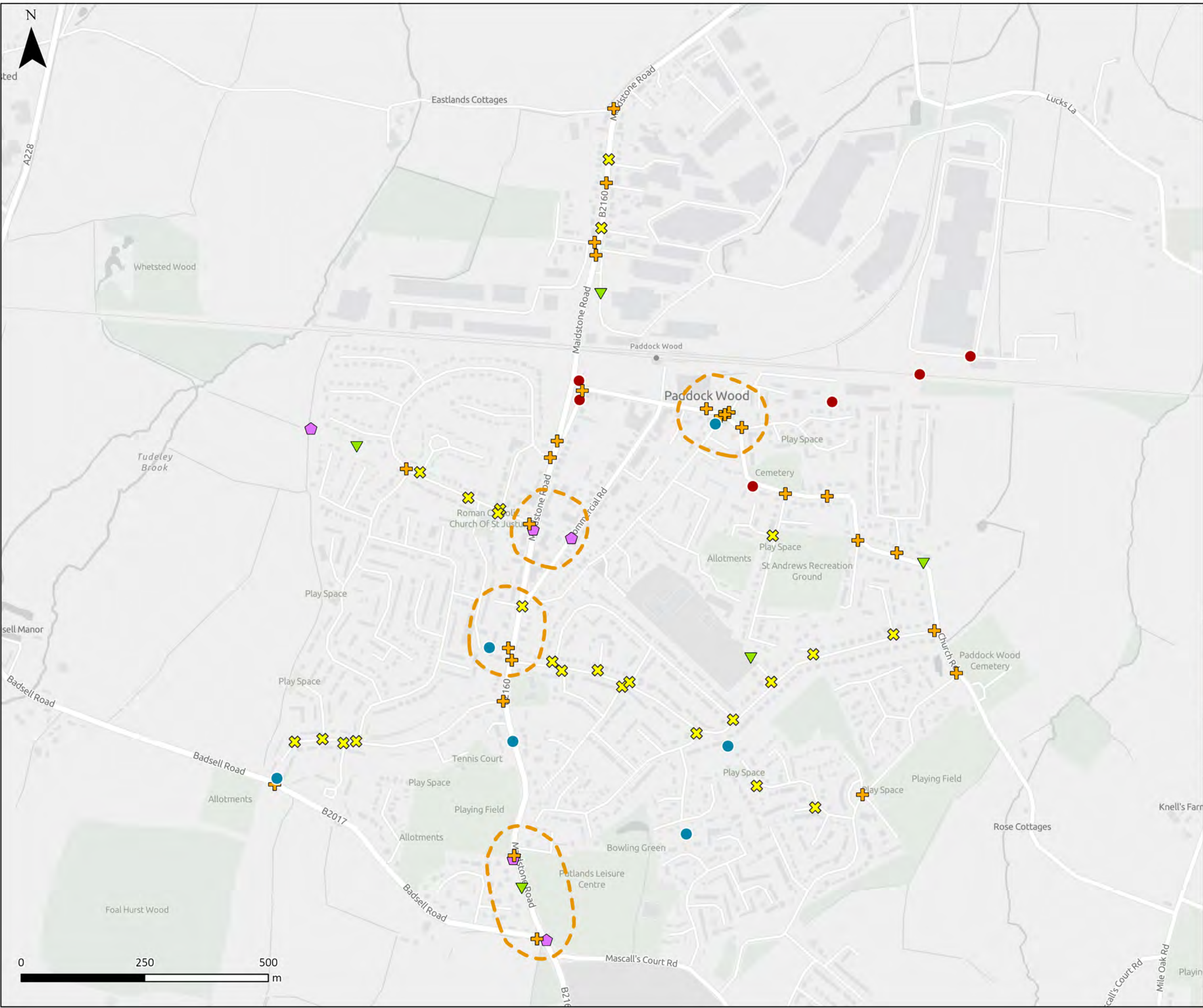
PROJECT

Tunbridge Wells
LCWIP + LTN

TITLE

LCWIP DESIGN MEASURES
(PADDOCK WOOD)

SCALE	DRAWN	REVIEWED	DATE
A3 @ 1:7,000	JY	BC	19/01/2021
FIGURE NUMBER		REVISION	
36		A	



Tunbridge Wells District Boundary

LCWIP Design Measures

Type

- Cycle Measures
- De-Cluttering
- Footway widening/ installation
- Junction
- Maintenance
- Missing DK/Tactile
- LCWIP Priority Clusters

Contains OS data © Crown Copyright and database right 2020
Contains data from OS Zoomstack

PJA  The Aquarium
King Street
Reading
RG1 2AN
T. 0118 956 0909

CLIENT

Tunbridge Wells
Borough Council

PROJECT

Tunbridge Wells
LCWIP + LTN

TITLE

LCWIP DESIGN MEASURES
(PADDOCK WOOD)

SCALE	DRAWN	REVIEWED	DATE
A3 @ 1:7,000	JY	BC	03/02/2021
FIGURE NUMBER	REVISION		
36	B		