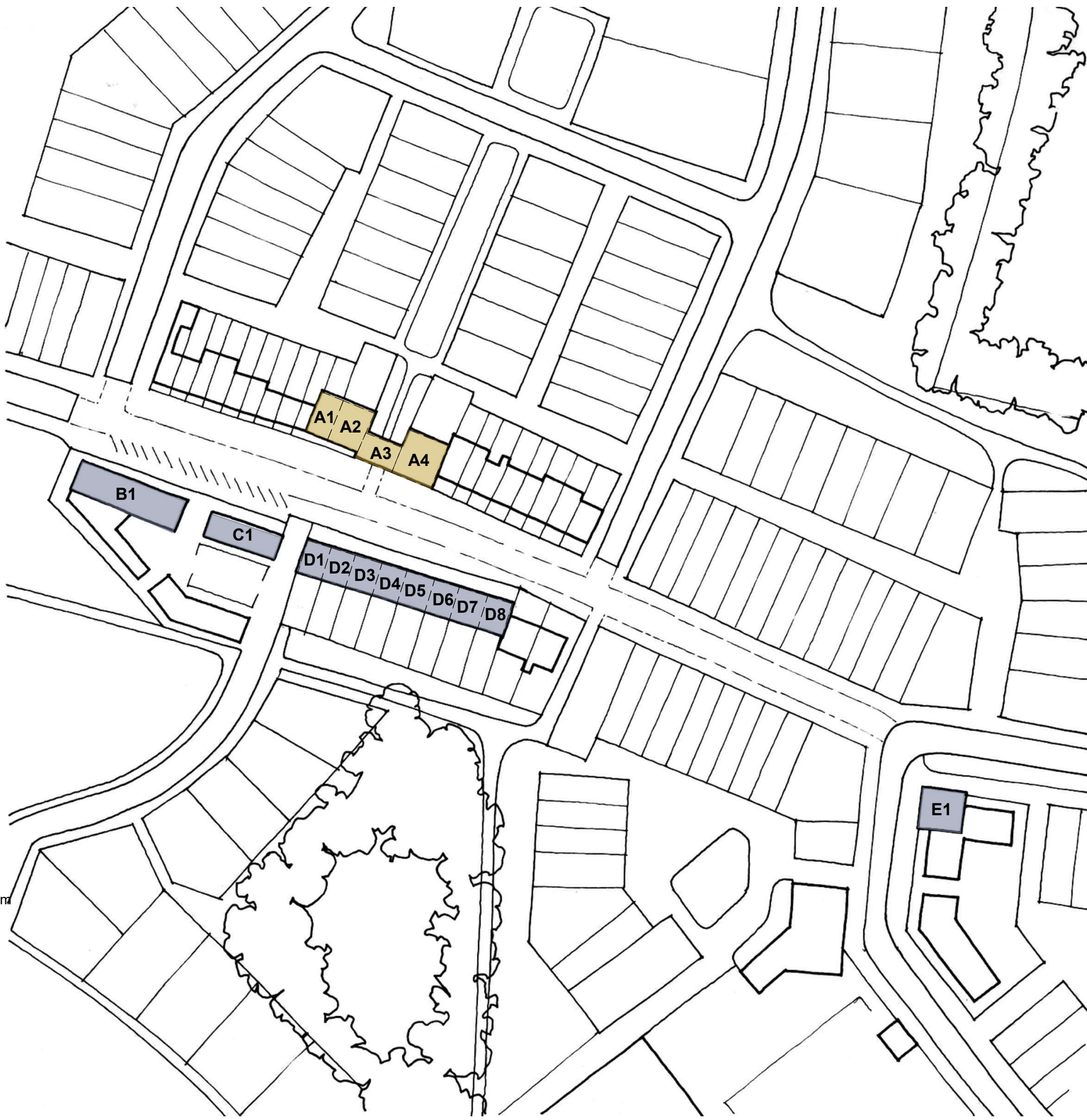


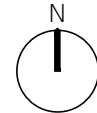
USE FIGURED DIMENSIONS ONLY. DO NOT SCALE FROM THIS DRAWING EXCEPT FOR PLANNING PURPOSES. ALL DIMENSIONS MUST BE CHECKED ON SITE. ANY INCONGRUENCIES MUST BE REPORTED BACK TO THE ARCHITECT. THIS DRAWING AND ANY DECISIONS INDICATED THEREON ARE THE COPYRIGHT OF BROOKS & MURRAY ARCHITECTS. ALL RIGHTS ARE RESERVED. NO PART OF THIS WORK MAY BE PRODUCED WITHOUT PRIOR PERMISSION IN WRITING FROM BROOKS & MURRAY ARCHITECTS. PLANNING STAGE DRAWINGS SHOULD NOT BE USED FOR CONSTRUCTION.

REV.	AMENDMENT	BY:	DATE
------	-----------	-----	------

A Block C use description updated FF 230123



Block	Unit	Class Use	Proposed use	m2
A	A1	E(c)(ii)	Professional services	61
	A2	E(c)(ii)	Professional services	85
	A3	E(c)(ii)	Professional services	66
	A4	E(c)(ii)	Professional services	121
				333
B	B1	E(a)	Grocery Store	212.3
C	C1	E(a)	Shop	101.8
	D1	E(a)	Shop	51
D	D2	E(a)	Shop	52.3
	D3	E(a)	Shop	57.8
	D4	E(a)	Shop	54.3
	D5	E(a)	Shop	61.3
	D6	E(a)	Shop	53.4
	D7	E(a)	Shop	61.5
	D8	E(a)	Shop	53.2
E	E1	E(b)	Café	104
				1195.9
		Retail	72%	862.9
		Office	28%	333
		Total		1195.9



RETAIL (72%)
OFFICE (28%)

Brooks Murray Architects
41 Tabernacle Street, London, EC2A 4AA
+44 (0)2077399955 admin@brooksmurray.com



CLIENT:
HADLOW ESTATE

JOB:
TUDELEY CHARRETTE
TUDELEY, KENT

DRAWING TITLE:
COMMERCIAL AREAS
NEIGHBOURHOOD CENTRE 2

SCALE:
1:1000@A3

DATE:
JANUARY 2023

STATUS:
DRAFT

DRAWING NUMBER: 1261 - 086
REV: A
ISSUED BY: FF

Class E - Commercial, Business and Service
E(a) Display or retail sale of goods, other than hot food
E(b) Sale of food and drink for consumption (mostly) on the premises
E(c) Provision of:
E(c)(i) Financial services,
E(c)(ii) Professional services (other than health or medical services), or
E(c)(iii) Other appropriate services in a commercial, business or service locality
E(d) Indoor sport, recreation or fitness (not involving motorised vehicles or firearms or use as a swimming pool or skating rink,)
E(e) Provision of medical or health services (except the use of premises attached to the residence of the consultant or practitioner)
E(f) Creche, day nursery or day centre (not including a residential use)
E(g) Uses which can be carried out in a residential area without detriment to its amenity:
E(g)(i) Offices to carry out any operational or administrative functions,
E(g)(ii) Research and development of products or processes
E(g)(iii) Industrial processes

