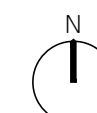


USE FIGURED DIMENSIONS ONLY. DO NOT SCALE FROM THIS DRAWING EXCEPT FOR PLANNING PURPOSES. ALL DIMENSIONS MUST BE CHECKED ON SITE. ANY INCONGRUENCIES MUST BE REPORTED BACK TO THE ARCHITECT. THIS DRAWING AND ANY DESIGNS INDICATED THEREON ARE THE COPYRIGHT OF BROOKS & MURRAY ARCHITECTS. ALL RIGHTS ARE RESERVED. NO PART OF THIS WORK MAY BE PRODUCED WITHOUT PRIOR PERMISSION IN WRITING FROM BROOKS & MURRAY ARCHITECTS. PLANNING STAGE DRAWINGS SHOULD NOT BE USED FOR CONSTRUCTION.

REV.	AMENDMENT	BY:	DATE
------	-----------	-----	------



Block	Unit	Class Use	Proposed use	m2
A	A1	E(a)	Shop	52
	A2	E(a)	Shop	52
	A3	E(a)	Shop	52
	A4	E(a)	Shop	55
	A5	E(a)	Grocery Store	110
	A6	E(c)(ii)	Professional services	90
				411
B	B1	E(c)(ii)	Professional services	105
	B2	E(c)(ii)	Professional services	85
	B3	E(c)(ii)	Professional services	85
				275
C	C1	E(a)	Café & Bakery	194
	D1	E(a)	Shop	83
D	D2	E(a)	Shop	83
E	E3	E(f)	Day Nursery	285.6
				1331.6
		Retail	73%	966.6
		Office	27%	365
		Total		1331.6



RETAIL (73%)
OFFICE (27%)

Brooks Murray Architects
41 Tabernacle Street, London, EC2A 4AA
+44 (0)2077399955 admin@brooksmurray.com



CLIENT:
HADLOW ESTATE

JOB:
TUDELEY CHARRETTE
TUDELEY, KENT

DRAWING TITLE:
COMMERCIAL AREAS
NEIGHBOURHOOD CENTRE 1

SCALE:
1:1000@A3

DATE:
JANUARY 2023

STATUS:
DRAFT

DRAWING NUMBER: 1261 - 085
REV: FF
ISSUED BY: FF

Class E - Commercial, Business and Service

- E(a) Display or retail sale of goods, other than hot food
- E(b) Sale of food and drink for consumption (mostly) on the premises
- E(c) Provision of:
 - E(c)(i) Financial services,
 - E(c)(ii) Professional services (other than health or medical services), or
 - E(c)(iii) Other appropriate services in a commercial, business or service locality
- E(d) Indoor sport, recreation or fitness (not involving motorised vehicles or firearms or use as a swimming pool or skating rink,)
- E(e) Provision of medical or health services (except the use of premises attached to the residence of the consultant or practitioner)
- E(f) Creche, day nursery or day centre (not including a residential use)
- E(g) Uses which can be carried out in a residential area without detriment to its amenity:
 - E(g)(i) Offices to carry out any operational or administrative functions,
 - E(g)(ii) Research and development of products or processes
 - E(g)(iii) Industrial processes