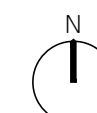


USE FIGURED DIMENSIONS ONLY. DO NOT SCALE FROM THIS DRAWING EXCEPT FOR PLANNING PURPOSES. ALL DIMENSIONS MUST BE CHECKED ON SITE. ANY INCONGRUENCIES MUST BE REPORTED BACK TO THE ARCHITECT. THIS DRAWING AND ANY DESIGNS INDICATED THEREON ARE THE COPYRIGHT OF BROOKS MURRAY ARCHITECTS. ALL RIGHTS ARE RESERVED. NO PART OF THIS WORK MAY BE PRODUCED WITHOUT PRIOR PERMISSION IN WRITING FROM BROOKS MURRAY ARCHITECTS. PLANNING STAGE DRAWINGS SHOULD NOT BE USED FOR CONSTRUCTION.

REV.	AMENDMENT	BY:	DATE
------	-----------	-----	------

Block	Unit	Class Use	Proposed use	m2
A	A1	E(a)	Shop	140
	A2	E(a)	Shop	140
	A3	E(a)	Pharmacy	220
				500
B	B1	E(a)	Supermarket	950
C	C1	E(c)(i)	Financial services	126
	C2	E(c)(ii)	Professional services	230
				356
D	D1	E(a)	Shop	150
	D2	E(a)	Shop	150
	D3	E(a)	Shop	150
	D4	E(b)	Deli	311.2
				761.2
E	E1	E(b)	Café	160
	E2	E(a)	Shop	180
	E3	E(a)	Shop	150
				490
F	F1	E(a)	Shop	110
	F2	E(a)	Shop	70
	F3	E(a)	Shop	70
				250
G	G1	E(a)	Shop	100
	G2	E(a)	Shop	100
	G3	E(e)	Dentist	130
				330
H	H1	E(b)	Ice cream kiosk	29
I		E(e)	GP	313
J	J1	E(d)	Gym	570
J	J2	E(e)	Vet	620
				1190
K	K1	E(g)(i)	Administrative functions	120
	K2	E(g)(i)	Administrative functions	120
				240
L	L1	E(g)(i)	Administrative functions	120
	L2	E(g)(i)	Administrative functions	120
				240
M	M1	E(c)(ii)	Professional services	160
	M2	E(c)(ii)	Professional services	140
				300
N	N1	E(g)(ii)	R&D	75
	N2	E(g)(ii)	R&D	75
	N3	E(g)(ii)	R&D	75
	N4	E(g)(ii)	R&D	75
				300

Retail	77%	4813.2
Office	23%	1436
Total		6249.2



RETAIL (77%)
OFFICE (23%)

Class E - Commercial, Business and Service

E(a) Display or retail sale of goods, other than hot food
 E(b) Sale of food and drink for consumption (mostly) on the premises
 E(c) Provision of:
 E(c)(i) Financial services,
 E(c)(ii) Professional services (other than health or medical services), or
 E(c)(iii) Other appropriate services in a commercial, business or service locality
 E(d) Indoor sport, recreation or fitness (not involving motorised vehicles or firearms or use as a swimming pool or skating rink.)
 E(e) Provision of medical or health services (except the use of premises attached to the residence of the consultant or practitioner)
 E(f) Creche, day nursery or day centre (not including a residential use)
 E(g) Uses which can be carried out in a residential area without detriment to its amenity:
 E(g)(i) Offices to carry out any operational or administrative functions,
 E(g)(ii) Research and development of products or processes
 E(g)(iii) Industrial processes

Brooks Murray Architects
 41 Tabernacle Street, London, EC2A 4AA
 +44 (0)2077399955 admin@brooksmurray.com



CLIENT:
HADLOW ESTATE

JOB:
TUDELEY CHARRETTE
TUDELEY, KENT

DRAWING TITLE:
COMMERCIAL AREAS
VILLAGE CENTRE

SCALE:
1:1000@A3

DATE:
JANUARY 2023

STATUS:
DRAFT

DRAWING NUMBER: 1261 - 084
 REV: FF
 ISSUED BY:

