

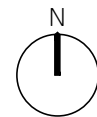
USE FIGURED DIMENSIONS ONLY. DO NOT SCALE FROM THIS DRAWING EXCEPT FOR PLANNING PURPOSES. ALL DIMENSIONS MUST BE CHECKED ON SITE. ANY INCONGRUENCIES MUST BE REPORTED BACK TO THE ARCHITECT. THIS DRAWING AND ANY DESIGNS INDICATED THEREON ARE THE COPYRIGHT OF BROOKS MURRAY ARCHITECTS. ALL RIGHTS ARE RESERVED. NO PART OF THIS WORK MAY BE PRODUCED WITHOUT PRIOR PERMISSION IN WRITING FROM BROOKS MURRAY ARCHITECTS. PLANNING STAGE DRAWINGS SHOULD NOT BE USED FOR CONSTRUCTION.

REV.	AMENDMENT	BY:	DATE
------	-----------	-----	------



Block	Unit	Class Use	Proposed use	m2
A	A1	E(c)(ii)	Professional services	62
	A2	E(c)(ii)	Professional services	62
	A3	E(c)(ii)	Professional services	110
				<b>234</b>
B	B1	E(a)	Grocery Store	<b>202.7</b>
C	C1	E(c)(ii)	Professional services	53
	C2	E(c)(ii)	Professional services	65
	C3	E(c)(ii)	Professional services	95
				<b>213</b>
D	D1	E(b)	Café	160
	D2	E(a)	Book store	81.4
				<b>241.4</b>
E	E1	E(a)	Shop	50.6
	E2	E(a)	Shop	45.1
	E3	E(a)	Shop	46.8
	E4	E(a)	Shop	47
	E5	E(a)	Shop	42
	E6	E(a)	Shop	40
	E7	E(a)	Shop	46
	E8	E(a)	Shop	67.7
				<b>385.2</b>
F	F1	E(g)(i)	Administrative functions	<b>123</b>
G	G1	E(a)	Shop	91
	G2	E(a)	Shop	91
	G3	E(a)	Shop	71.8
	G4	E(a)	Shop	62
	G5	E(a)	Shop	50
	G6	E(a)	Shop	50
	G7	E(a)	Shop	72.2
	G8	E(a)	Shop	64.5
	G9	E(a)	Shop	85
	G10	E(a)	Shop	84
	G11	E(a)	Shop	99.3
				<b>820.8</b>

Retail	74%	1650.1
Office	26%	570
<b>Total</b>		<b>2220.1</b>



**RETAIL (74%)**  
**OFFICE (26%)**

Brooks Murray Architects  
41 Tabernacle Street, London, EC2A 4AA  
+44 (0)2077399955 admin@brooksmurray.com



CLIENT:  
HADLOW ESTATE

JOB:  
TUDELEY CHARRETTE  
TUDELEY, KENT

DRAWING TITLE:  
COMMERCIAL AREAS  
NEIGHBOURHOOD CENTRE 3

SCALE:  
1:1000@A3

DATE:  
JANUARY 2023

STATUS:  
DRAFT

DRAWING NUMBER: 1261 - 087  
REV: ISSUED BY: FF

**Class E - Commercial, Business and Service**  
E(a) Display or retail sale of goods, other than hot food  
E(b) Sale of food and drink for consumption (mostly) on the premises  
E(c) Provision of:  
E(c)(i) Financial services,  
E(c)(ii) Professional services (other than health or medical services), or  
E(c)(iii) Other appropriate services in a commercial, business or service locality  
E(d) Indoor sport, recreation or fitness (not involving motorised vehicles or firearms or use as a swimming pool or skating rink.)  
E(e) Provision of medical or health services (except the use of premises attached to the residence of the consultant or practitioner)  
E(f) Creche, day nursery or day centre (not including a residential use)  
E(g) Uses which can be carried out in a residential area without detriment to its amenity:  
E(g)(i) Offices to carry out any operational or administrative functions,  
E(g)(ii) Research and development of products or processes  
E(g)(iii) Industrial processes